

## Microsoft Windows Vista Practice Demo

1. Some of the computers in your company run Microsoft Office 2003. Other computers run Microsoft Office 2007. Users report that when they save documents on computers that run Office 2007, users on computers that run Microsoft Office 2003 are unable to edit those documents. You need to ensure that users on computers that run Office 2003 are able to edit Office 2007 documents. What should you do?

A: Add the Office Compatibility Pack to the computers that run Office 2007.

B: Add the Office Compatibility Pack to the computers that run Office 2003.

C: Install Office 2003 Service Pack 2 on the computers that run Office 2003.

D: Install MSXML 6.0 on computers that run Microsoft Office 2003.

Correct Answers: B

2. You are planning to upgrade to Microsoft Office 2007. You need to identify documents that are not compatible with Office 2007. What should you do?

A: Run the OMPM File Scanner tool.

B: Run the Application Compatibility Analyzer.

C: Run the Office File Converter.

D: Run the Office Customization Tool.

Correct Answers: A

3. You need to install Microsoft Office 2007 on computers in the Sales department and computers in the Accounting department. The Sales department requires only Microsoft Word and Microsoft Excel. The Accounting department requires only Microsoft Excel and Microsoft InfoPath. You need to deploy Office 2007 to computers in the Sales department and the Accounting department. You create a shared folder named \\Server1\Office. What should you do next?

A: Copy the Microsoft Office 2007 installation files to the \\Server1\Office folder. Create an .MSP file for each department. Create a script for each department that uses the appropriate .MSP file.

B: Copy the Microsoft Office 2007 installation files to the \\Server1\Office folder. Create an .MST file for each department. Create a script for each department that uses the appropriate .MST file.

C: In the \\Server1\Office folder, create a folder for each department. Copy the Microsoft Office 2007 installation files to each folder. Create a CUSTOM.MSP file in each folder. Instruct users to run setup from the appropriate folder.

D: In the \\Server1\Office folder, create a folder for each department. Copy the Microsoft Office 2007 installation files to each folder. Create a CUSTOM.MST file in each folder. Instruct users to run setup from the appropriate folder.

Correct Answers: A

4. Your company is deploying Windows Vista. You create a reference computer and capture an image of that computer by using the ImageX utility.

You need to modify the reference computer image to meet the following requirements:

- Set the Internet Explorer home page to your companys home page.
- Remove Games from the image.
- Add a new network card device driver.

You must accomplish this task by using the least administrative effort.

What should you do?

- A: Use the ImageX utility to mount the image. Copy an unattended setup answer file to the \Windows folder in the image.
- B: Use the ImageX utility to mount the image. Apply an unattended setup answer file to the image.
- C: Restore the image of the reference computer. Modify the configuration of the reference computer. Recapture an image of the reference computer.
- D: Restore the image of the reference computer. Copy an unattended setup answer file to the \Windows folder on the reference computer. Recapture an image of the reference computer.

Correct Answers: B

5. You are deploying Microsoft Office 2007 to computers that run Windows Vista. The computers are configured to support the English, Spanish, and French languages.

Users report that only the English language is displayed in Office 2007 applications.

You need to ensure that Office 2007 displays the English, Spanish and French languages.

What should you do?

- A: Add the Microsoft Office 2007 Single Language Packs to the root of the Office 2007 installation share. Instruct users to run the Office 2007 Setup program.
- B: Create a subdirectory for each language on the Office 2007 installation share. Add the Office 2007 Single Language Packs to the appropriate subdirectory. Edit the config.xml file on the installation share. Instruct users to run the Office 2007 Setup program.
- C: Use the PKGMGR command to add the Windows Vista language packs to the client computers. Edit config.xml file on the installation share. Instruct users to run the Office 2007 Setup program.
- D: Use the PKGMGR command to add the Windows Vista language packs to the installation source for Windows Vista. Edit the unattend.xml file in the Windows Vista installation source. Instruct users to run the Office 2007 Setup program.

Correct Answers: B

6. You are installing Microsoft Office 2007. You configure two distribution points. One distribution point is named \\Server1\Office2007. The other distribution point is named \\Server2\Office 2007. You need to ensure that if one distribution point becomes unavailable, Microsoft Office 2007 will

use the other distribution point. What should you do? (Each correct answer presents a complete solution. Choose two.)

A: On each distribution server, create an administrative installation point.

B: On the root of each distribution point, create a shortcut which points to the additional distribution point.

C: Create a Custom.MSP file.

D: Configure the Config.XML file.

Correct Answers: C, D

7. You plan to deploy Microsoft Office 2007 using a script. You need to create a distribution share for Microsoft Office 2007. You create a shared folder on a server. What should you do next?

A: Run the Microsoft Office 2007 installation program with the /config switch.

B: Run the Microsoft Office 2007 installation program with the /admin switch.

C: Install Microsoft Office 2007 on a reference computer. Copy the MSOCache folder to the root of the installation share.

D: Copy the installation files from the source media to the root of the shared folder.

Correct Answers: D

8. You use the Application Compatibility Toolkit (ACT) to analyze computers before deploying Windows Vista. You create a data collection package which contains the Internet Explorer Compatibility Evaluator and the Inventory Collector. Company policy requires that all software package installation be done during non-peak hours. You need to ensure the data collection package is deployed to computers. What should you do?

A: Create a user logon script. Add the data collection package to the logon script.

B: Create a computer software installation policy in a Group Policy object.

C: Create an SMS Package which contains the data collection package. Advertise the package to install at a specified time.

D: Create a user software installation policy in a Group Policy object.

Correct Answers: C

9. You deploy Windows Vista on 500 computers in your network. You discover that one of your applications does not function correctly in Windows Vista. You also discover that the application requires Windows XP Service Pack 2. You need to ensure that the application functions correctly in Windows Vista. You must accomplish this task with the least administrative effort. What should you do?

A: Disable the User Account Control: Virtualize file and registry write failures to per-user locations security option.

B: Set the Compatibility mode to Windows XP (Service Pack 2) on the properties of the application properties

C: Use the Compatibility Administrator to create a new application fix that sets the Operating System Mode to Microsoft Windows XP (SP2).

D: Use the Compatibility Administrator to create a new application fix that sets the WinXPSP2VersionLie compatibility mode.

Correct Answers: C

10. You plan to upgrade computers to Windows Vista. One of the applications uses a custom Windows logon dialog box. You use the Application Compatibility Toolkit (ACT) to collect compatibility information on the computers in your network. You need to ensure that there are no known compatibility issues with the application. What should you do?

A: Examine the Vista Compatibility Evaluation Report

B: Examine the Update Compatibility Evaluation Report

C: Examine the Impact Analyzer Reports

D: Examine the Impact Application Reports

Correct Answers: A

11. You plan to upgrade computers in the Sales department to Windows Vista. You need to generate a list of applications that are installed on computers in the Sales department. You install the Application Compatibility Toolkit (ACT) on your computer. What should you do next?

A: Deploy the Internet Explorer Compatibility Evaluator

B: Deploy the User Account Control Compatibility Evaluator

C: Deploy the Update Compatibility Evaluator

D: Deploy the Vista Compatibility Evaluator

E: Deploy the Inventory Collector

Correct Answers: E

12. You upgrade computers on your network to Windows Vista. You discover that one of the applications is not compatible with Windows Vista. You use the Compatibility Administrator to create a custom application compatibility database that contains an Application Fix. You need to install the Application Fix on the Windows Vista computers. What should you do?

A: Create a script that installs the Application Compatibility Toolkit.

B: Deploy the Update Compatibility Evaluator.

C: Create a script that uses the SDBINST command.

D: Disable User Account Control.

Correct Answers: C

13. You plan to upgrade computers to Windows Vista. The computers will be used to access a Web application named App1. You install the Application Compatibility Toolkit (ACT) on a client computer. You need to identify compatibility issues with App1. What should you do?

A: Deploy the Internet Explorer Compatibility Evaluator

B: Deploy the User Account Control Compatibility Evaluator

C: Deploy the Update Compatibility Evaluator

D: Deploy the Vista Compatibility Evaluator

E: Deploy the Inventory Collector

Correct Answers: A

14. You install the Application Compatibility Toolkit (ACT) on a client computer named Client1. You configure the ACT to use an existing SQL Server instance on server named Server1. You need to ensure that the ACT Log Processing Service can access the database on Server1. What should you do?

A: Configure the ACT Log Processing Service to run using the Local Service account.

B: Grant the Server1\Network Service account read and write access to the database.

C: Grant the Client1 computer account read and write access to the database.

D: Create a new SQL Server Account named ACTLog. Grant ACTLog read and write access to the database.

Correct Answers: C

15. You plan to upgrade to Windows Vista. You discover that an application named App1 is not compatible with Windows Vista and cannot be modified to run on Windows Vista. App1 requires Windows XP Service Pack 2. You verify that the Windows XP Service Pack 2 compatibility mode fails to allow the application to run. You need to ensure that users can use App1 while running Windows Vista. What should you do?

A: Configure the users computers to dual boot between Windows XP Service Pack 2 and Windows Vista.

B: Create a virtual machine that runs Windows XP Service Pack 2. Deploy the virtual machine to the Windows Vista computers.

C: Copy the Windows XP Service Pack 2 installation files to the WinSxS folder. Copy the App1 executable files to the WinSxS folder.

D: Create a custom Program Information File (PIF) for the App1 executable files.

Correct Answers: B

16. You create a reference computer image using Business Desktop Deployment (BDD) Workbench. You add applications to the reference computer build. You build the reference computer using BDD Lite Touch Installation (LTI). You discover that the reference computer fails to build correctly. You also discover that the applications are installing in the incorrect order. You need to ensure that the reference computer builds successfully. What should you do?

A: Remove all applications from the build. Re-add the applications in the order from last installed to first installed.

B: Edit the unattend.xml file in the build properties.

C: Edit the customsettings.ini file in BDD Workbench

D: Modify the task sequence in the build properties.

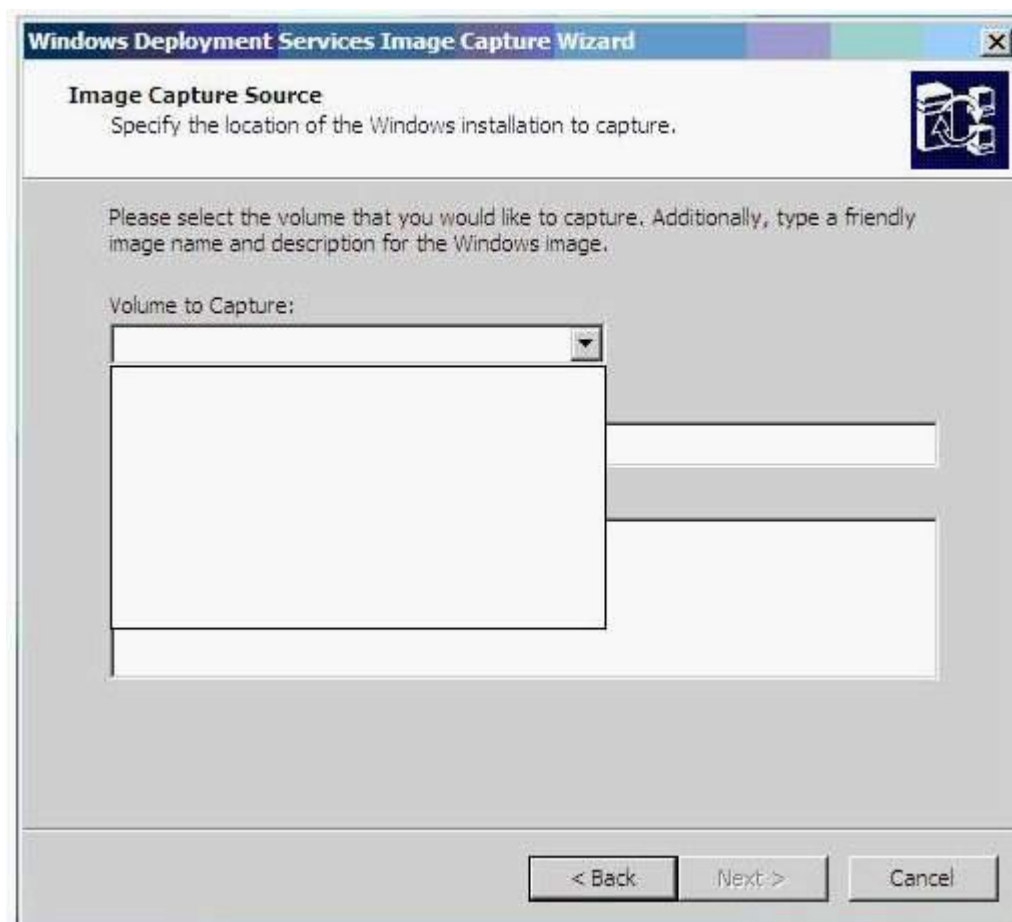
Correct Answers: D

17. You create a reference computer image using Windows Deployment Services (WDS). You run sysprep.exe on the reference computer. You restart the reference computer and network boot using the WDS Capture image.

You discover that you are unable to select a volume to capture using the WDS Image Capture Wizard. The WDS Image Capture Wizard is shown in the exhibit. (Click the Exhibit button.)

You need to ensure you can capture an image of the reference computer using the WDS Image Capture Wizard.

What should you do?



A: Restart the reference computer. Create a folder named sysprep in the root of the system volume. Add the unattend.xml file to the sysprep folder. Run sysprep /oobe on the reference computer.

B: Restart the reference computer. Run sysprep /generalize /oobe on the reference computer.

C: Restart the reference computer. Run sysprep /audit /oobe on the reference computer.

D: Restart the reference computer. Add the autoattend.xml file to the root of the system volume. Run sysprep /audit on the reference computer.

Correct Answers: B

18. You use Business Desktop Deployment (BDD) Workbench to create custom builds of Windows PE. You need to ensure that the Windows PE builds contain the company logo. What should you do?

A: Use the ImageX command to mount each build of Windows PE. Add the company logo to the root of the build of Windows PE.

B: Customize the WINBOM.INI file to include the path to the company logo.

C: Include the path to the company logo in the properties of the master build in BDD Workbench.

D: Include the path to the company logo in the WINPESHL.INI file.

Correct Answers: C

19. You use Business Desktop Deployment (BDD) Lite Touch Installation (LTI) to deploy Windows Vista. Computers in the Marketing department do not support network boot using PXE. You need to perform LTI of Windows Vista on computers in the Marketing department. What should you do?

A: Use Systems Management Server to create an OSD Deploy CD.

B: Use Windows Deployment Services to create a WDS Image Deploy CD.

C: Use Windows Automated Installation Kit to create a Windows PE CD.

D: Use the BDD Workbench to create a deployment CD.

Correct Answers: D

20. You use Business Desktop Deployment (BDD) Workbench to create a reference computer build. You need to include Microsoft Office 2007 in the reference computer build process. What should you do?

A: Copy the application source files to the application folder of the distribution share.

B: Use the BDD Workbench to add the application to the build.

C: Run the Microsoft Office 2007 installation program with the /admin switch.

D: Run the Microsoft Office 2007 installation program with the /config switch.

Correct Answers: B

21. You create a Windows Vista build using Business Desktop Deployment (BDD) Workbench that will install an application that uses an MSI installation package. You need to ensure that the application installs without displaying a user interface. You add the application MSI package to the Command line parameter of the New Application Wizard. What should you do next?

A: Include the Passive command line switch in the application command line.

B: Include the Quiet command line switch in the application command line.

C: Include a custom.xml file in the application source folder.

D: Include an autounattend.xml file in the application source folder.

Correct Answers: B

22. You use Business Desktop Deployment (BDD) Workbench to deploy Windows Vista. You use

Windows System Image Manager to create an unattended setup installation file named unattend.xml. You need to include the unattend.xml file in your Windows Vista build. What should you do?

A: Rename the unattend.xml file to autounattend.xml. Copy the autounattend.xml file to the folder that contains the Windows Vista build.

B: Copy the unattend.xml file into the folder that contains the Windows Vista build. Overwrite the existing unattend.xml.

C: Copy the unattend.xml file to the root of the Control directory.

D: Rename the unattend.xml file to autounattend.xml. Copy the autounattend.xml file to the Control directory.

Correct Answers: B

23. You install the Business Desktop Deployment (BDD) Workbench on a computer named Client1. You create a distribution point using a shared folder named Images on a server named Server1. You need to ensure that users can install builds available from the \\Server1\Images deployment point.

You also need to ensure that deployment engineers can make configuration changes to builds that are available from the \\Server1\Images deployment point.

You must accomplish this task while maintaining the highest possible security on the deployment point.

What should you do?

A: Grant all users Modify access to the deployment point.

B: Grant deployment engineers Full Control and users Modify access to the Deployment point.

C: Grant deployment engineers Modify and users Read access to the deployment point.

D: Grant deployment engineers Full Control and users Read access to the deployment point.

Correct Answers: C

24. You use Business Desktop Deployment (BDD) to upgrade 500 computers from Windows XP to Windows Vista. You install and configure BDD Workbench on a Server named Server1. You create a deployment solution which includes a distribution share and several builds. You add a new Server named Server2 to increase deployment capacity.

You need to duplicate the deployment solution from Server1 on Server2.

What should you do?

A: Copy the distribution folder from Server1 to Server2. Update the builds to use the distribution folder on Server2

B: Backup the System State on Server1. Restore the System State on Server2.

C: Install BDD Workbench on Server2. Configure BDD Workbench on Server2 to use the distribution share on Server1.

D: Install Systems Management Server (SMS) on Server1 and Server2. Configure both servers as SMS distribution points.

Correct Answers: A

25. You plan to deploy Windows Vista to computers in your network.

One of your desktop deployment engineers is responsible for the following tasks:

Building reference computer images

Ensuring that devices will function correctly in Windows Vista.

Creating Lite Touch deployment points.

Creating custom builds of Windows PE that run scripts.

Developing fixes for non Vista-compatible applications

You need to create a technician computer for the desktop deployment engineer.

What should you do? (Each correct answer presents part of the solution. Choose three.)

A: Install the Application Compatibility Toolkit

B: Install the User State Migration Tool

C: Install Business Desktop Deployment Workbench

D: Install the Windows Automated Installation Kit

E: Install Windows Deployment Services

F: Install the Systems Management Server Operating System Deployment Feature Pack

Correct Answers: A, C, D